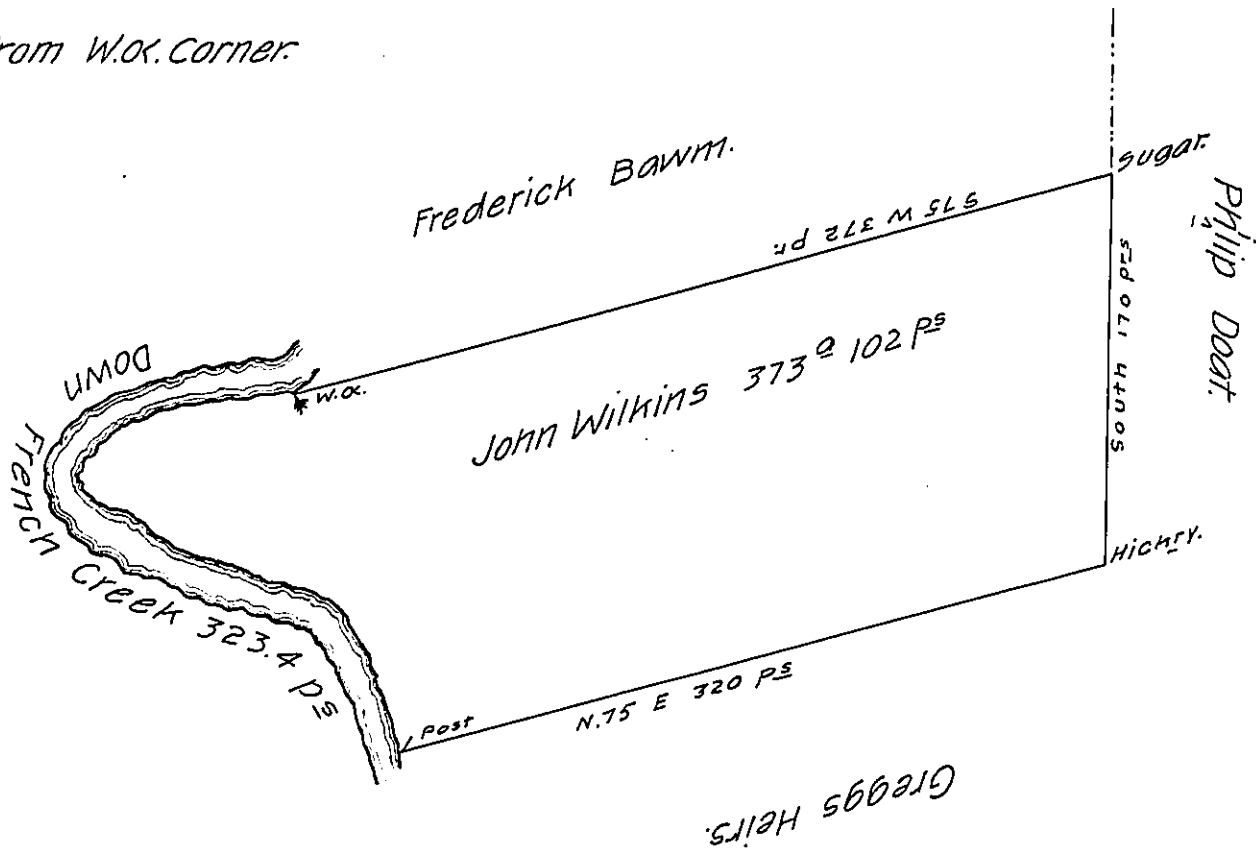


River Courses from W.O. Corner.

- 5.59 W 11
- 5.86 W 20
- 5.83 W 19
- 5.67 W 44.5
- 5.45 W 17
- 5.85 E. 14
- 5.59 E 18
- 5.44 E 22
- 5.64 E 20
- EAST 24.9
- 5.69 E 20
- 5.56 E 25
- 5.25 E 49
- 5.26 E 19



323.4

Situate on the East Side of French Creek in ALLY County, Con-
 taining 373 Acres 102 perches & allowance of six pr. Cent for Roads
 &c. Resurveyed the 20th day of September 1797 In pursuance of a
 Warrant Granted John Wilkins dated the 18th day of March 1795
 (It being the same Tract of Land Surveyed the 6th day of May 1794
 to Hugh Dupry In pursuance of his Improvement Bearing date the 3^d
 day of April 1792.

John Power, D^y. S^r

To Daniel Brodhead Esq^r,
 Surveyor General.

IN TESTIMONY that the above is a copy of the original remaining on file in
 the Department of Internal Affairs of Pennsylvania, made
 conformably to an Act of Assembly approved the 16th day of
 February, 1833, I have hereunto set my Hand and caused
 the Seal of said Department to be affixed at Harrisburg,
 this twenty eighth day of September, 1906.

Isaac D. Smith
 Secretary of Internal Affairs.